

TRAINING AND TECHNICAL ASSISTANCE RESOURCE CATALOG

A program of the Children's Bureau (CB), Administration for Children and Families (ACF),
co-funded by the Substance Abuse and Mental Health Services Administration (SAMHSA).

The materials and resources in this catalog are available at no cost and can be
accessed at <https://ncsacw.acf.hhs.gov/>.



WHO WE ARE

The National Center on Substance Abuse and Child Welfare (NCSACW) is a national resource center providing information, expert consultation, training, and technical assistance to child welfare, dependency court, substance use, and mental health treatment professionals. NCSACW focuses on improving the safety, permanency, well-being, and recovery outcomes for children, parents, and families.

NCSACW's goals are to:

- Facilitate healing and recovery among children, youth, parents, and families affected by SUDs and mental health challenges who are either involved—or at risk of involvement—with the child welfare and family judicial systems
- Promote the social and emotional well-being of children and youth who have experienced maltreatment, exposure to violence, or trauma associated with parental substance misuse and mental health challenges
- Advance racial equity and support for underserved communities and improving access for special populations including Tribes

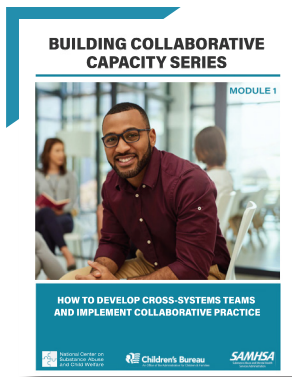
Learn more about NCSACW by viewing our [Who We Are](#) video.



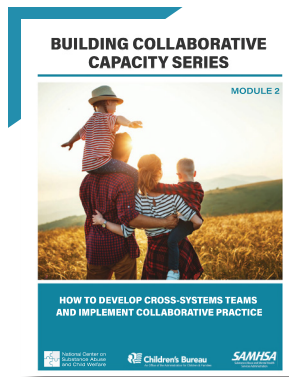
BRINGING SYSTEMS TOGETHER

No individual agency can do it alone—collaboration across multiple systems leads to better outcomes for all parents, families, and children. These resources provide practice and policy strategies aimed at building a strong collaborative partnership.

- The ***Building Collaborative Capacity Series*** offers strategies states and communities may use to create cross-systems collaborative teams, communication protocols, and practice innovations. The strategies improve screening, assessment, and engagement to best serve families affected by substance use disorders (SUDs) and child welfare service involvement. The seven modules include:



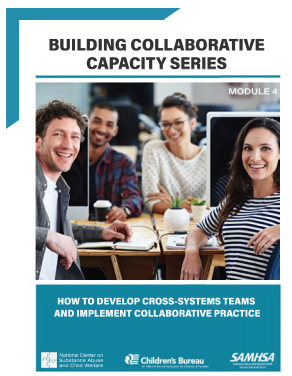
Module 1: *Setting the Collaborative Foundation: Developing the Structure of Collaborative Teams to Serve Families Affected by Substance Use Disorders*



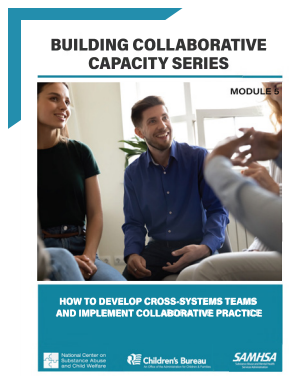
Module 2: *Setting the Collaborative Foundation: Addressing Values and Developing Shared Principles and Trust in Collaborative Teams*



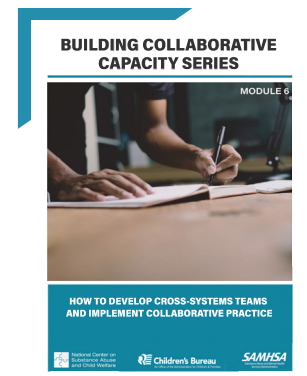
Module 3: *Setting the Collaborative Foundation: Establishing Practice-Level Communication Pathways and Information-Sharing Protocols*



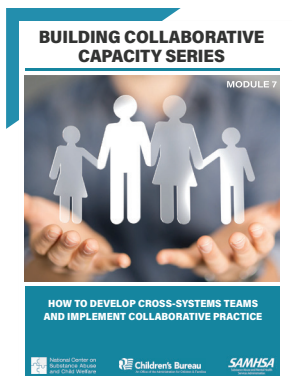
Module 4: *Setting the Collaborative Foundation: Establishing Administrative-Level Data Sharing to Monitor and Evaluate Program Success*



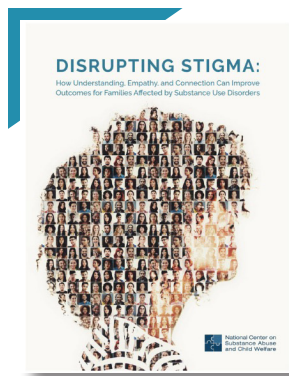
Module 5: *Frontline Collaborative Efforts: Developing Screening Protocols to Identify Parental Substance Use Disorders and Related Child and Family Needs*



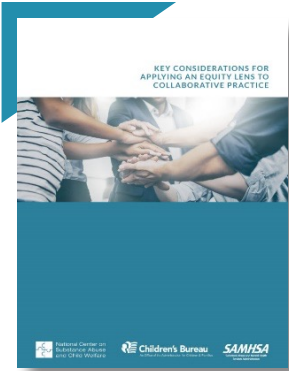
Module 6: *Frontline Collaborative Efforts: Establishing Comprehensive Assessment Procedures and Promoting Family Engagement into Services*



Module 7: *Frontline Collaborative Efforts: Developing and Monitoring Joint Case Plans and Promoting Treatment Retention and Positive Family Outcomes*

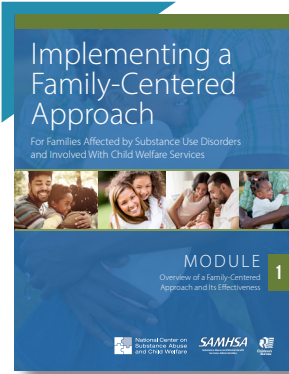


Disrupting Stigma: How Understanding, Empathy, and Connection Can Improve Outcomes for Families Affected by Substance Use Disorders supports cross-system collaborative teams in their work to reduce stigma in interactions, expectations, and policies affecting families. This brief provides several strategies, including how to: 1) intentionally use language to fight stigma, and 2) facilitate engagement with parents and family members affected by SUDs.

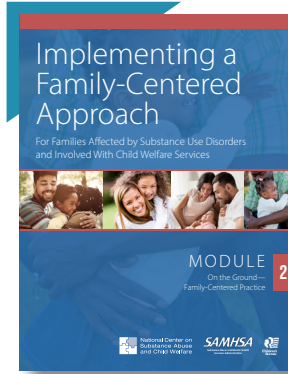


- ***Key Considerations for Applying an Equity Lens to Collaborative Practice*** helps collaborative teams formally assess existing policies to determine if and how they contribute to disproportionate and disparate outcomes for families. Teams working through the “Questions to Consider” learn to apply an equity lens to collaborative policies and practices.

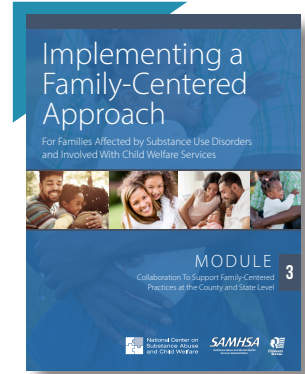
- The ***Implementing a Family-Centered Approach Modules*** help collaborative partners at all levels improve systems, services, and outcomes for children and families affected by SUDs. The series includes:



Module 1: Overview of a Family-Centered Approach and Its Effectiveness



Module 2: On the Ground: Family-Centered Practice



Module 3: Collaboration to Support Family-Centered Practices at the County and State Level

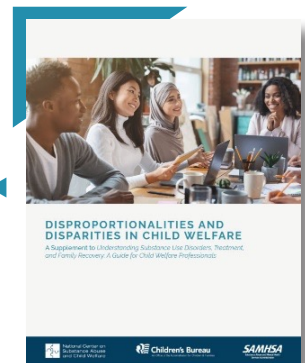
WORKFORCE DEVELOPMENT

NCSACW develops resources and training to support child welfare, court, substance use disorder, mental health, and other social service professionals. Resources include materials to: 1) better understand the effects of SUDs on families, child welfare, and the courts; and 2) strengthen collaboration by increasing knowledge about a variety of other disciplines. Professionals who thoroughly understand families’ issues are more equipped to provide support.

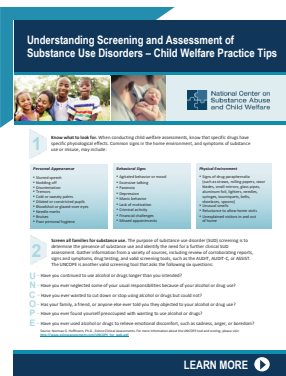
- NCSACW offers **free** discipline-specific ***online tutorials*** focusing on the fundamentals of child welfare, SUD treatment, and the courts—while highlighting the importance of cross-system collaboration. Continuing Education Units (CEUs) are available upon completion of each. Tutorials include:

- ***A Guide for Substance Abuse and Treatment Professionals: Understanding Child Welfare and Dependency Court***
- ***A Guide for Child Welfare Professionals: Understanding Substance Use Disorders, Treatment, and Family Recovery***
- ***A Guide for Legal Professionals: Understanding Substance Use Disorders, Treatment, and Family Recovery***

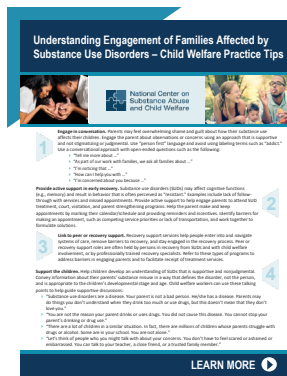
- ***Disproportionalities and Disparities in Child Welfare—A Supplement to Understanding Substance Use Disorders, Treatment, and Family Recovery: A Guide for Child Welfare Professionals***



- The ***Child Welfare Training Toolkit*** informs child welfare workers on substance use and co-occurring disorders among families involved in the child welfare system. The training includes 10 independent modules that are adaptable to any jurisdiction:
 - Module 1: *Understanding the Multiple Needs of Families Involved with the Child Welfare System*
 - Module 2: *Understanding Substance Use Disorders, Treatment, and Recovery*
 - Module 3: *Understanding Co-Occurring Substance Use Disorders, Mental Health/Trauma, and Domestic Violence*
 - Module 4: *Engagement and Intervention with Parents Affected by Substance Use Disorders and Mental Health/Trauma*
 - Module 5: *Case Planning, Family Strengthening, and Planning for Safety for Families with a Substance Use Disorder*
 - Module 6: *Understanding the Needs of Children of Parents with Substance Use or Co-Occurring Disorders*
 - Module 7: *Collaborating to Serve Parents with Substance Use Disorders*
 - Special Topic: *Considerations for Families in the Child Welfare System Affected by Methamphetamine*
 - Special Topic: *Considerations for Families in the Child Welfare System Affected by Opioids*
 - Special Topic: *Understanding Prenatal Substance Exposure and Child Welfare Implications*
- The ***Child Welfare Practice Tips*** provide clearly defined action steps staff can take to increase their effectiveness when assisting families with SUDs.



Understanding Screening and Assessment of Substance Use Disorders—Child Welfare Practice Tips



Understanding Engagement of Families Affected by Substance Use Disorders—Child Welfare Practice Tips



Understanding Substance Use Disorders—What Child Welfare Staff Need to Know



- ***Understanding Substance Use Disorder Treatment: A Resource for Professionals Referring to Treatment*** offers a fundamental understanding of the nature of treatment, principles of effective treatment, treatment process, and potential funding sources. This tool also includes a list of questions to ask treatment providers so staff can make informed referral decisions and ensure services meet the needs for parents and families affected by SUDs.

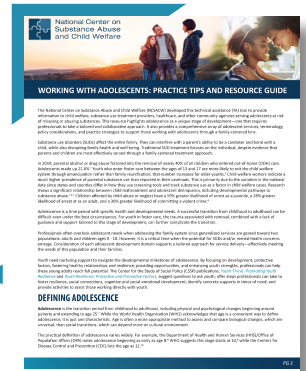


MEETING THE NEEDS OF CHILDREN

NCSACW works to support the social and emotional needs of all children, prenatally through adolescence. The following materials can be used to understand and promote child well-being.



- **Supporting Children Affected by Parental Methamphetamine Use** explores how parental methamphetamine use affects a child's health and well-being.
- **Working with Adolescents: Practice Tips and Resource Guide** contains tips and resources for child welfare, substance use treatment providers, healthcare, and other community agencies serving adolescents at risk of misusing substances.



- **Meeting the Moment: How Child Welfare and Substance Use Disorder Treatment Professionals Can Address the Needs of Adolescents at Risk of Suicide and Mental Health Concerns** webinar highlights the alarming number of adolescents at risk of substance use, suicide, trauma, and mental health concerns. This webinar focuses on identification of adolescents at risk, prevention-based interventions, and key strategies and resources to promote resilience, recovery, and positive youth development for adolescents involved in child welfare.

SYSTEMS-LEVEL POLICY EFFORTS THAT SUPPORT PRACTICE INNOVATIONS

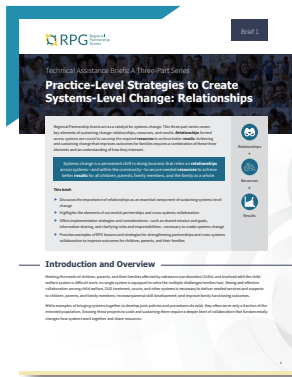
NCSACW develops resources to support systems-level policy efforts that help build strong multiagency collaborative teams that can implement and sustain practice strategies on behalf of families affected by SUDs and involved with child welfare services.



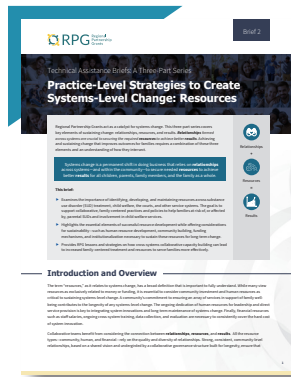
- **Brief 1: Considerations for Developing a Child Welfare Drug Testing Policy and Protocol** offers key steps for child welfare agency policymakers to consider when developing a drug testing policy.
- **Sustainability Toolkit: Five Steps to Build a Sustainability Plan for Systems Change** offers collaboratives, organizations, and programs the tools they need to create a sustainability approach for innovative projects. The tools include a sustainability planning matrix, community mapping guide, cost analysis checklist, assessment, and data and funding inventory templates.



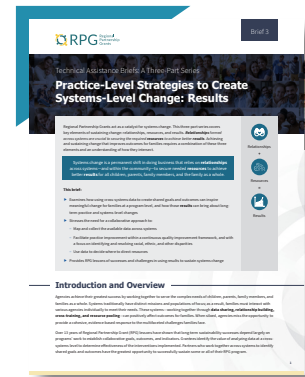
Practice-Level Strategies to Create Systems-Level Change series includes three briefs that explore the key components of sustaining systems-level change—relationships, resources, and results.



Brief 1: Relationships



Brief 2: Resources



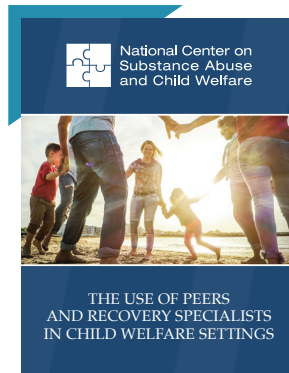
Brief 3: Results

PRACTICE STRATEGIES AND INNOVATIONS

Innovative practice strategies are essential to improve outcomes for families affected by SUDs and involved with child welfare. These resources can help teams develop more effective strategies:



Brief 2: Drug Testing for Parents Involved in Child Welfare: Three Key Practice Points provides practice considerations to help child welfare workers implement drug testing into their daily practice.



The Use of Peers and Recovery Specialists in Child Welfare Settings examines how child welfare agencies and family court programs can integrate peers and recovery specialists into their service delivery.



Strategies To Support Parents with Methamphetamine Use Disorder and Their Families provides facts about methamphetamine use, effectiveness of treatment, and strategies for child welfare workers and other professionals.



Family-Centered Approach for Families Affected by Substance Use Disorders webinar highlights innovative strategies and implementation considerations from the Implementing a Family-Centered Approach Modules.



- **Supporting Families During a Public Health Crisis** is a series of tip sheets that provide education, support, and guidance to organizations supporting families affected by SUDs with child welfare involvement during a public health crisis. Resources include:



Resources to Support Cross-System Collaboration



Resources to Support the Workforce



Resources for Families Affected by Substance Use Disorders and Who Are Involved With Child Welfare Services

CHILDREN AND FAMILIES AFFECTED BY PARENTAL SUBSTANCE USE

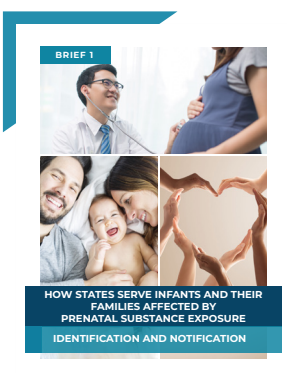
INFANTS WITH PRENATAL SUBSTANCE EXPOSURE

NCSACW provides training, technical assistance, and resources that identify policy and practice strategies to improve outcomes for infants and families affected by prenatal substance exposure.

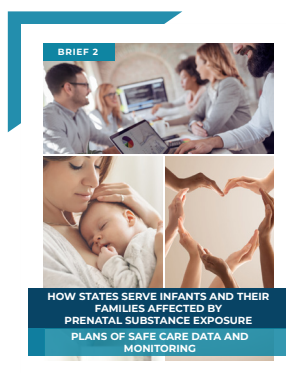


- **Infants with Prenatal Substance Exposure and their Families: Five Points of Family Intervention** identifies key moments when agencies can best improve outcomes for infants with prenatal exposure, pregnant and parenting women with SUDs, and families.

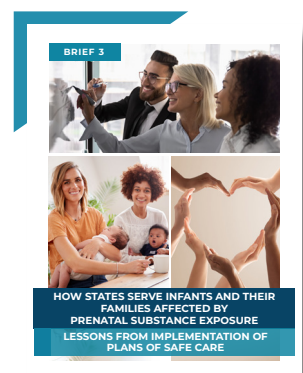
- **How States Serve Infants and Their Families Affected by Prenatal Substance Exposure** stems from NCSACW's review of states' *Annual Progress and Services Reports (APSRs)*. These briefs pertain to Section 503 "Infant Plan of Safe Care" of the Child Abuse and Prevention Treatment Act (CAPTA). The series includes:



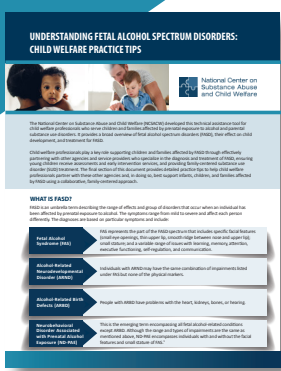
Brief 1: Identification and Notification



Brief 2: Plans of Safe Care Data and Monitoring



Brief 3: Lessons from Implementation of Plans of Safe Care



- Understanding Fetal Alcohol Spectrum Disorders: Child Welfare Practice Tips** assists child welfare professionals who serve children and families affected by alcohol use disorder. The tips provide a broad overview of fetal alcohol spectrum disorders (FASD); their effect on child development; treatment for FASD; and child welfare practice strategies to support infants, children, and families with a family-centered approach.

- Understanding Fetal Alcohol Spectrum Disorders for Substance Use Treatment Professionals** informs those who treat: 1) parents with alcohol disorders and SUDs, and 2) infants and children who may face prenatal alcohol exposure. It offers a broad overview of FASD including symptoms and effects, screenings, plus helpful supports and interventions. This resource also highlights signs of FASD among adults in treatment.



- Guidance from the American Academy of Pediatrics on Neonatal Opioid Withdrawal Syndrome** webinar provides: 1) current information on the opioid crisis, 2) implications for the mother/infant dyad, and 3) an overview of American Academy of Pediatrics' revised guidance on neonatal opioid withdrawal syndrome.
- A Mother Centered Approach to Treat Neonatal Abstinence Syndrome** webinar discusses how to reduce infants' lengths of stay in the hospital by transitioning to a "tasks for infants" model (eating, sleeping, and consoling).
- The Management of Care for Pregnant Women with Opioid and Other Substance Use Disorders** webinar examines: 1) strategies for working with addiction medicine physicians, 2) the role obstetricians play alongside child welfare agencies to develop POSC in the prenatal period, and 3) how to support women and infants in the important "fourth trimester."
- Changing How We Treat Neonatal Abstinence Syndrome: A Quality Improvement Approach** webinar highlights Tampa General Hospital's Neonatal Intensive Care Unit (NICU)—specifically, its culture and practice changes when working with prenatal substance exposure, and the collaborative partnership with Florida's Department of Health. This webinar provides an overview of neonatal abstinence syndrome, the Florida Perinatal Quality Collaborative (FPQC), as well as practice changes and provider trainings in the NICU.

PLAN OF SAFE CARE (POSC)

NCSACW resources provide policy and practice strategies derived from years of practice-based experience. These tools support tribes, regions, states, and local jurisdictions as they consider how to collaborate POSC for infants in their communities.

- The **Plan of Safe Care Learning Modules** is a five-part series on POSC for infants born with and identified as affected by substance use or withdrawal symptoms—either from prenatal drug exposure, FASD, or their affected family or caregiver. These modules include the following:
 - Module 1: *Preparing for Plan of Safe Care Implementation*
 - Module 2: *Collaborative Partnerships for Plans of Safe Care*
 - Module 3: *Determining Who Needs a Plan of Safe Care*
 - Module 4: *Implementing and Monitoring Plans of Safe Care*
 - Module 5: *Overseeing State Plans of Safe Care Systems and Reporting Data*

- On the Ground: How States are Addressing Plans of Safe Care for Infants with Prenatal Substance Exposure** offers state examples of comprehensive approaches to POSC. These examples can help states and agencies consider practice and policy systems changes to best serve these families.



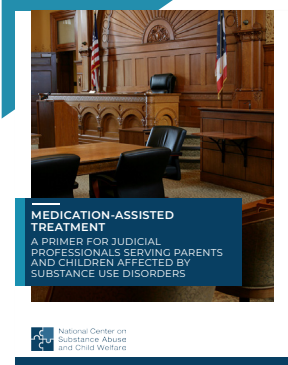
- Introduction to the Plan of Safe Care Learning Modules** webinar highlights practice examples aligning with changes in CAPTA; these modules support family health, safety, well-being, and recovery through POSC development.



- **Model Examples for Plan of Safe Care Implementation: Live Panel Discussion** features state and county child welfare professionals—along with health care and SUD representatives—discussing POSC development.

OPIOIDS & MEDICATION-ASSISTED TREATMENT

NCSACW develops materials to help professionals better understand medication-assisted treatment (MAT) as a viable option for parents/caregivers with SUDs—especially opioid use disorders (OUD).



- **Medication-Assisted Treatment: A Primer for Judicial Professionals Serving Parents and Children Affected by Opioid Use Disorders** provides an overview of MAT—including the benefits and risks, barriers to treatment, language considerations, and the importance of collaboration. The resource focuses on MAT with regard to special populations, including pregnant women, parents involved in the child welfare system, and individuals with co-occurring disorders.

- **Medication-Assisted Treatment in the Courtroom: A Benchcard for Judicial Professionals Serving Parents and Children Affected by Opioid Use Disorders** is designed for judicial professionals and collaborative partners serving families affected by OUD. The benchcard includes an overview of MAT, information on frequently used medications, questions to facilitate discussions with court participants, and links to additional resources with a focus on special populations.

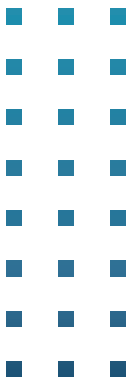


- **Opioid Use Disorder and Civil Rights Video and Webinar Series** is a five-part training series that provides information to child welfare and court professionals about federal disability rights protections for certain parents with an OUD or other SUD—who are also involved with child welfare. This series includes
 - Part 1: *Civil Rights Protections for Individuals with a Disability: The Basics* webinar
 - Part 2: *Civil Rights Protections for Individuals with an Opioid Use Disorder* webinar
 - *Medication-Assisted Treatment and Common Misconceptions* motion graphic
 - *Child Welfare Case Staffing: Social Worker and Supervisor* animated video
 - *Child Welfare Case Staffing: Child Welfare Court Case* animated video



- **Resources to Support Families in Child Welfare Affected by Opioid and Other Substance Use Disorders** is a webinar featuring a variety of technical assistance resources, including publications, webinars, and tools that communities can use to better serve families in child welfare affected by SUD and OUD.





CONTACT US



Email NCSACW at
ncsacw@cffutures.org



Visit the website at
<https://ncsacw.acf.hhs.gov>



Call toll-free at
866.493.2758

Acknowledgment: This resource guide is supported by contract number 75S20422C00001 from the Children's Bureau (CB), Administration for Children and Families (ACF), co-funded by the Substance Abuse and Mental Health Services Administration (SAMHSA). The views, opinions, and content of this guide are those of the authors and do not necessarily reflect the views, opinions, or policies of ACF, SAMHSA or the U.S. Department of Health and Human Services (HHS).